

This article was downloaded by: [Tomsk State University of Control Systems and Radio]

On: 20 February 2013, At: 13:22

Publisher: Taylor & Francis

Informa Ltd Registered in England and Wales Registered Number: 1072954

Registered office: Mortimer House, 37-41 Mortimer Street, London W1T 3JH, UK



## Molecular Crystals and Liquid Crystals

Publication details, including instructions for authors and subscription information:

<http://www.tandfonline.com/loi/gmcl16>

### High Pressure Study of Phase Transitions in DMPC-Water System

R. Shashidhar<sup>a</sup>, B. P. Gaber<sup>b</sup>, S. Krishna Prasad<sup>a</sup> & S. Chandrasekhar<sup>a</sup>

<sup>a</sup> Raman Research Institute, Bangalore, 560080, India

<sup>b</sup> Naval Research Laboratory, Washington, D.C., 20375, USA

Version of record first published: 20 Apr 2011.

To cite this article: R. Shashidhar, B. P. Gaber, S. Krishna Prasad & S. Chandrasekhar (1984): High Pressure Study of Phase Transitions in DMPC-Water System, Molecular Crystals and Liquid Crystals, 110:1-4, 153-160

To link to this article: <http://dx.doi.org/10.1080/00268948408074503>

PLEASE SCROLL DOWN FOR ARTICLE

Full terms and conditions of use: <http://www.tandfonline.com/page/terms-and-conditions>

This article may be used for research, teaching, and private study purposes. Any substantial or systematic reproduction, redistribution, reselling, loan, sub-licensing, systematic supply, or distribution in any form to anyone is expressly forbidden.

The publisher does not give any warranty express or implied or make any representation that the contents will be complete or accurate or up to date. The accuracy of any instructions, formulae, and drug doses should be

independently verified with primary sources. The publisher shall not be liable for any loss, actions, claims, proceedings, demand, or costs or damages whatsoever or howsoever caused arising directly or indirectly in connection with or arising out of the use of this material.

## HIGH PRESSURE STUDY OF PHASE TRANSITIONS IN DMPC-WATER SYSTEM

R. SHASHIDHAR,<sup>\*</sup> B. P. GABER<sup>+</sup>, S. KRISHNA PRASAD<sup>\*</sup> and  
S. CHANDRASEKHAR<sup>\*</sup>

<sup>\*</sup>Raman Research Institute, Bangalore 560080, India

<sup>+</sup>Naval Research Laboratory, Washington, D.C. 20375, USA

We have carried out a detailed pressure study of the three phase transitions observed in hydrated dimyristoyl phosphatidylcholine (DMPC) containing 95% by weight of water. The P-T diagram shows a Gel III-Gel II-Gel I triple point at 3.5 kbar, 41°C. It is found that the Gel III phase can be obtained by pressure-annealing the sample for about 12 hours at room temperature.

### INTRODUCTION

Phase transitions in hydrated dimyristoyl phosphatidylcholine (DMPC) have been investigated in detail.<sup>1-5</sup> In the low hydration regime, there are four distinct transitions whose temperatures vary significantly with water content. However for water concentrations greater than about 30% (by weight), the transitions are independent of the composition: there is a *main* transition at ~24°C and a *pretransition* at ~14°C.<sup>1</sup> The main transition occurs between a fluid-like liquid crystalline phase and a solid-like gel phase (Gel I) and the pretransition between the Gel I phase and another gel phase (Gel II). The structures of these phases appear

to be well established.<sup>1</sup> The liquid crystalline phase has a lamellar structure with the hydrocarbon chains conformationally disordered (Fig.1a). The Gel I phase has a two-dimensional lattice structure in which the lipid bilayer

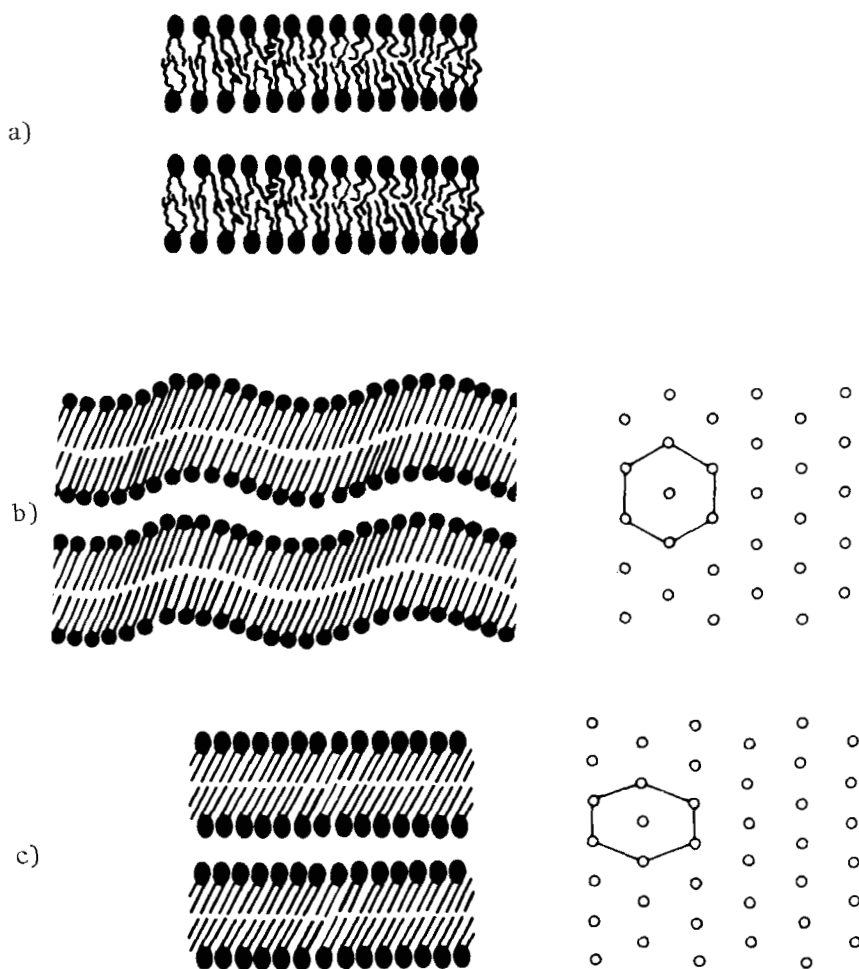


Figure 1 Schematic representation of the structures of (a) Liquid crystal, (b) Gel I, and (c) Gel II phases of hydrated DMPC.

lamellae are distorted by a periodic *ripple* in the plane of the lamellae (Fig.1b); the hydrocarbon chains are in a relatively ordered state and tilted with respect to the bilayer normal and packed in a regular hexagonal lattice. The Gel II phase has a lamellar bilayer arrangement with the hydrocarbon chains fully extended and tilted, but packed in a distorted hexagonal lattice (Fig.1c). Recently, a third transition (Gel II-Gel III) has been observed at  $-60^{\circ}\text{C}$ .<sup>5</sup> The structure of the Gel III phase is still to be elucidated.

There have been some pressure experiments on the DMPC-water system,<sup>6-9</sup> but all of them (except that of Wong et al<sup>9</sup>) have been concerned with the main transition only. Wong et al<sup>9</sup> have reported measurements for all three transitions, but the data are not adequate to construct a complete pressure-temperature (P-T) diagram for this system. In this paper we describe a more detailed pressure study up to 4.2 kbar of the transitions in hydrated DMPC (containing 95 wt % of water).

## EXPERIMENTAL

### A. Sample preparation

DMPC was purchased from Avanti Polar Lipids, Alabama and used without further purification. 50 mg of the phospholipid was dissolved in chloroform. The solvent was removed by drying overnight in vacuum (1 mm). The phospholipid was then dispersed in 1 cc of 0.1 molar KCl in water, warmed to  $35^{\circ}\text{C}$  and agitated gently until the sample became milky white. Differential scanning calorimetry runs, particularly of the pretransition, showed that the sample was well homogenised. Also, the transition temperatures at 1 bar agreed very well

with those reported in the literature.

### B. Pressure apparatus

The phase transitions were detected by the optical transmission technique. An optical high pressure cell was used for the experiments. Hydrated DMPC was sandwiched between two optically polished sapphire cylinders which are enclosed in a fluran tube so that the sample is isolated from the pressure transmitting fluid (Plexol). The sample thickness was about 0.5 mm. The experiments were always conducted along isobars and in the heating mode, i.e., the transition temperature at any pressure was determined by raising the temperature at a constant rate of 1°C/min. The temperature at which there was an abrupt change of transmitted light intensity was taken as the transition temperature. Typical curves for the transmitted light intensity are shown in Fig.2. Pressures were measured to a precision of  $\pm 1.5$  bars using a Heise Gauge. The temperatures were determined to an accuracy of  $\pm 0.05^\circ\text{C}$  using a thermocouple whose junction was located in the interior of the pressure cell. Further details of the set up are described elsewhere.<sup>10,11</sup>

### RESULTS AND DISCUSSION

Both the pretransition and the main transition could be followed as functions of pressure starting from atmospheric pressure. However, it was not possible to observe the Gel III-Gel II transition at lower pressures. (As already mentioned this transition occurs at  $-60^\circ\text{C}$  at 1 bar). This was because the pressure cell could not be used below  $6^\circ\text{C}$ , the 'O' rings used in the cell losing their sealing property below this temperature. However, it was found that

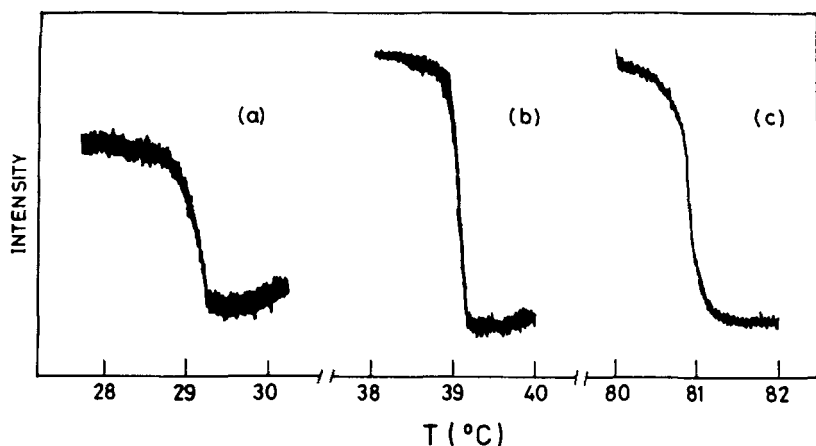


Figure 2 Raw traces showing the change in the transmitted light intensity at the transitions; (a) Gel III-Gel II, 3.10 kbar, (b) Gel II-Gel I, 3.10 kbar, (c) Gel I-Liquid Crystal, 3.12 kbar. The heating rate is  $1^{\circ}\text{C}/\text{min.}$  for all the transitions. The intensity scales for (a), (b) and (c) are different.

by keeping the sample at room temperature and at a pressure of 3 kbar for about 12 hours, the material formed the Gel III phase, and the Gel III-Gel II transition could be clearly observed. Having once observed this transition, the sample had to be pressure annealed once again in order to re-observe the transition. Therefore by successive pressure-annealing at different pressures, it was possible to follow the Gel III-Gel II transition for pressures beyond 3 kbar.

The P-T diagram showing all the three phase transitions is given in Figure 3. It is seen that the range of the Gel I phase increases with increasing pressure, showing thereby that the interactions responsible for the formation

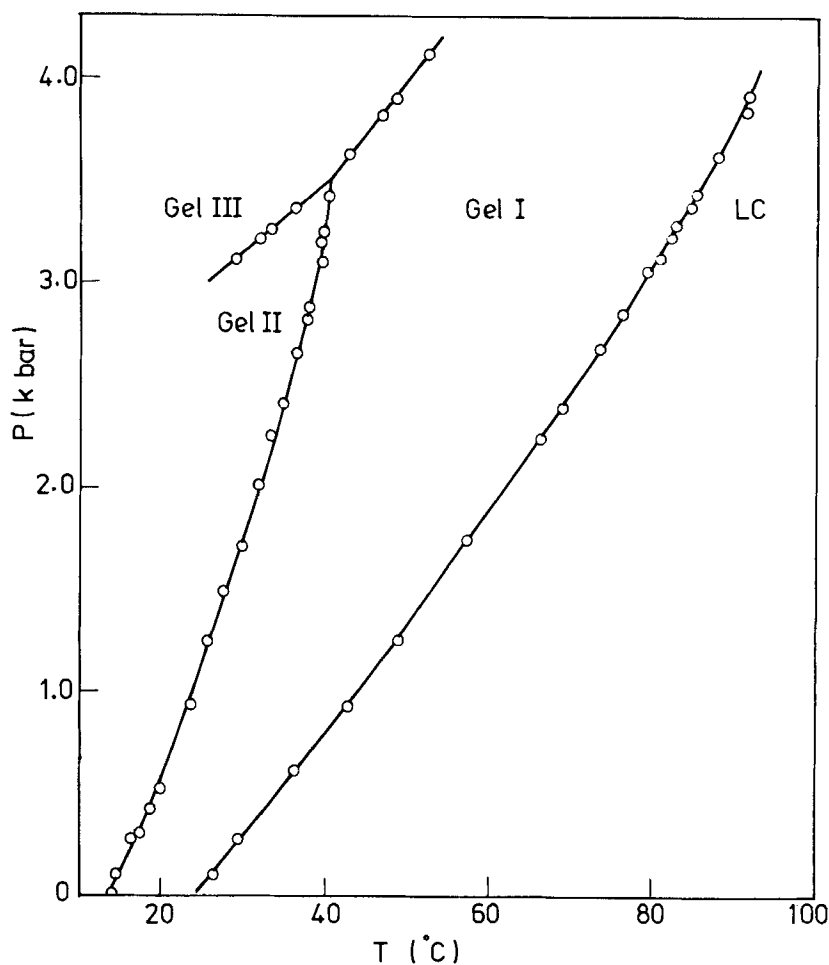


Figure 3 P-T diagram of hydrated DMPC. The Gel III - Gel II - Gel I triple point is at 3.5 kbar, 41 $^{\circ}\text{C}$ .

of the hexagonally ordered Gel I phase are probably stabilised at high pressures. The variation of the Gel I-liquid crystal as well as that of the Gel II-Gel I phase boundaries are linear up to about 1.2 kbar beyond which there is a small curvature towards the pressure axis, a feature



which is commonly observed in thermotropic liquid crystal systems. The  $dT/dP$  corresponding to the linear portions of the phase boundaries are  $21.4^{\circ}\text{C/kbar}$  and  $10.6^{\circ}\text{C/kbar}$  respectively. Since the volume change at 1 bar for the Gel-liquid crystal transitions is known,<sup>12</sup>  $\Delta V = 27 \times 10^{-3} \text{ cc/gm}$ ,  $dT/dP$  can be calculated from Clausius-Clapeyron equation using our value of  $\Delta H = 6.4 \text{ kcal/mol}$  as measured by DSC. The value comes out to be  $21.9^{\circ}\text{C/kbar}$  which compares very well with the experimental value of  $21.4^{\circ}\text{C/kbar}$ .

The Gel III-Gel II transition line when extrapolated linearly to atmospheric pressure gives a transition temperature of about  $-60^{\circ}\text{C}$ , in agreement with the value reported by Wong and Mantsch.<sup>5</sup> The Gel II phase decreases in range with increasing pressure and ultimately gets bounded at 3.5 kbar; beyond this pressure Gel III transforms directly to Gel I. We thus have a Gel III-Gel II-Gel I *triple point* at 3.5 kbar,  $41^{\circ}\text{C}$ . Table 1 gives the  $dT/dP$  values for the three boundaries at the triple point. The  $dT/dP$  values derived from the initial linear portions of the Gel II-Gel I and Gel I-liquid crystal boundaries are also given in the same table for comparison.

TABLE I  $dT/dP$  values (in  $^{\circ}\text{C/kbar}$ ) for the various transitions in hydrated DMPC

Transition	$dT/dP$ at 1 bar	$dT/dP$ at the triple point
Gel I - Liquid crystal	21.4	-
Gel II - Gel I	10.6	5.1
Gel III - Gel II	-	29.2
Gel III - Gel I	-	20.0

Experiments on hydrated dipalmitoyl phosphatidyl choline(DPPC) are under way and will be reported elsewhere. It is also proposed to take up high pressure Xray studies to investigate in some detail the structural changes involved in these transitions.

#### ACKNOWLEDGEMENTS

This work was supported by the National Science Foundation (Grant No.INT-8207204) under its Special Foreign Currency Program.

#### REFERENCES

1. M.J.JANIAK, D.M.SMALL and G.G.SHIPLEY, J.Biol.Chem. 254, 6068 (1979).
2. N.YELLIN and I.W.LEVIN, Biochem. 16, 642 (1977).
3. S.C.CHEN and J.M.STURTEVANT, Biochem. 20, 713 (1981).
4. D.CHAPMAN, Advances in Liquid Crystals, 5, 1 (1982).
5. P.T.T.WONG and H.H.MANTSCH, Can.J.Chem. 60, 2137 (1982).
6. J.R.TRUDELL, D.G.PAYAN, J.H.CHIN and E.N.COHEN, Biochim.Biophys.Acta, 373, 436 (1974).
7. K.HEREMANS, Ann.Rev.Biophys.Bioeng. 11, 1 (1982).
8. N.D.RUSSELL and P.J.COLLINGS, J.Chem.Phys. 77, 5766 (1982).
9. P.T.T.WONG, W.F.MURPHY and H.H.MANTSCH, J.Chem.Phys. 76, 5230 (1982).
10. A.N.KALKURA, R.SHASHIDHAR and M.SUBRAMANYA RAJ URS, J.de Physique, 44, 51 (1983).
11. A.N.KALKURA, 'High Pressure Optical Studies of Liquid Crystals', Ph.D.Thesis, University of Mysore, 1982.
12. J.F.NAGLE and D.A.WILKINSON, Biophys.J. 23, 159 (1978).